

A large, stylized netball is centered in the background. It features a grey wireframe structure with four thick, curved bands in light blue, light red, light green, and light purple wrapping around it.

# Netball Northern Zone Member Forum 13 September 2014



**NETBALL  
NORTHERN**

*Integrity, Unity, Loyalty, Excellence*

# Introduction

Dianne McAteer: Chair Netball Northern Zone & Greater Auckland Netball Ltd (Northern Mystics)



**NETBALL  
NORTHERN**

*Integrity, Unity, Loyalty, Excellence*

# Introduction

- Introduction of team and their roles
  - Jill Clapcott
  - Hamish Barton
  - Trish Wilcox
  - Tracey Spence
  - Jan Skilton
  - Anne Nicholson
  - Sarah Brierly
  - Jo Hona
  - Trina Henare
  - Northern Mystics team



**NETBALL  
NORTHERN**

*Integrity, Unity, Loyalty, Excellence*



# Strategic Plan Pillars

- Community and Culture
  - Increase participation
  - Build trust-based, collaborative relationships that advance netball within our Zone
  - Deliver value to all centres a way that meets their individual needs
  - Working with Netball NZ in an integrated way



**NETBALL  
NORTHERN**

*Integrity, Unity, Loyalty, Excellence*



# Strategic Plan Pillars



- Capability
  - Coaches
  - Umpires
  - Technical Officials
  - Volunteers



**NETBALL  
NORTHERN**

*Integrity, Unity, Loyalty, Excellence*



# Strategic Plan Pillars

- High Performance
  - Top 4 in ANZ Championship
  - Developing quality athletes through our Performance and High Performance Programmes
  - Integrated programme delivery in line with Netball NZ programmes
  - Appropriate athlete support



**NETBALL  
NORTHERN**

*Integrity, Unity, Loyalty, Excellence*



# Strategic Plan Pillars

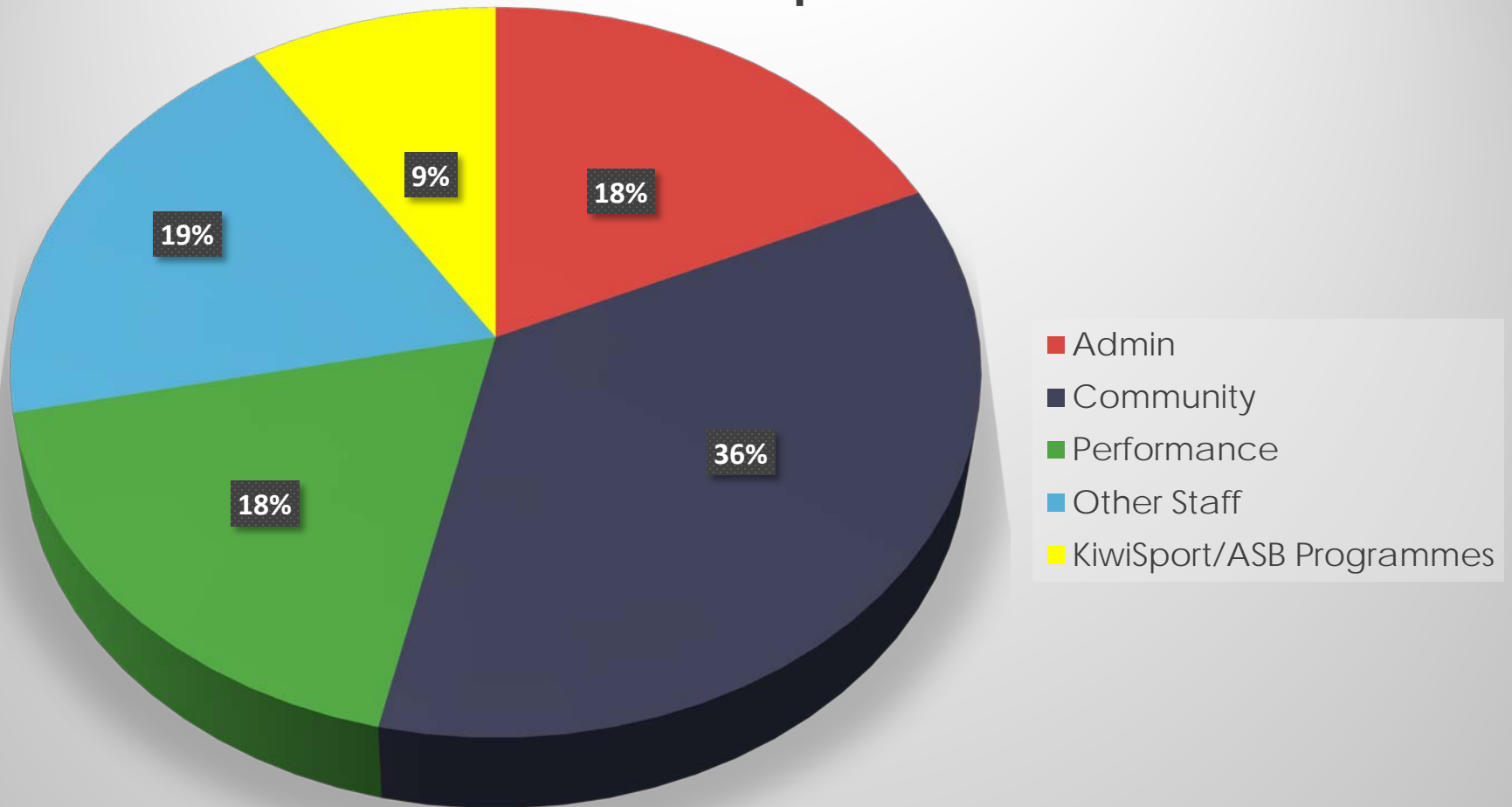
- Business Capability
  - Financial sustainability
  - Sharing of best practice throughout our Zone
  - Northern Mystics are our ‘shop front’ for netball
  - Retain & deliver value to our funders/sponsors
  - High quality staff throughout our Zone



**NETBALL  
NORTHERN**

*Integrity, Unity, Loyalty, Excellence*

## 2014 Expenditure



**NETBALL  
NORTHERN**

*Integrity, Unity, Loyalty, Excellence*





# Financial Report

- 2014 Year End Forecast
  - Projected break even position for the Zone
  - Projected deficit for the Mystics
  - Zone Budget carefully managed throughout the year and we 'cut our cloth' with expenditure
  - Mystics has been incredibly challenging with many fixed costs that we cant cut
  - Revenue down, with drop in expected ticket sales and membership as well as not meeting sponsorship targets

# Financial Report con't

- New sponsorship increased by 50%
- However the loss of LG could not be recouped through additional revenue
- Costs were reduced to absolute minimum, including disestablishing one role
- Player payments have remained static for past three years

# Budget 2015

- Levies from the Northern Zone will increase by CPI of 1.6%
- Budget for 2015 remains largely unchanged except the increase for performance coach development
- Any new staff would now be funded roles
- Working with NNZ to establish optimum delivery model for the zone



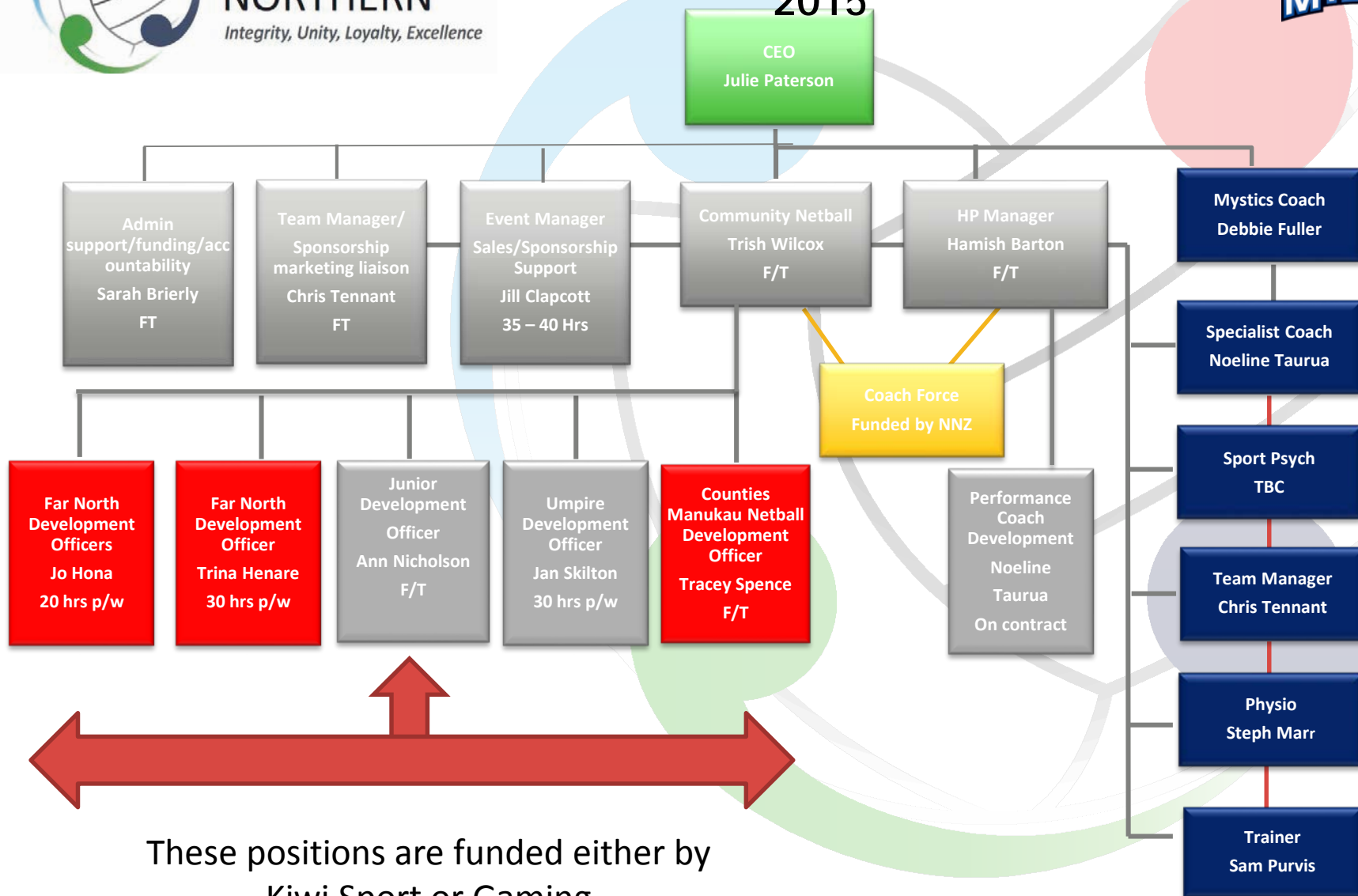
**NETBALL  
NORTHERN**

*Integrity, Unity, Loyalty, Excellence*



**NETBALL  
NORTHERN**  
*Integrity, Unity, Loyalty, Excellence*

## Current and 2015



These positions are funded either by  
Kiwi Sport or Gaming



**NETBALL  
NORTHERN**  
*Integrity, Unity, Loyalty, Excellence*

# Summary

- A challenging year financially
- Thank you for your support – we all have a vested interest in making sure the Zone structure works
- We are absolutely committed to delivery value



**NETBALL  
NORTHERN**

*Integrity, Unity, Loyalty, Excellence*

# TOWARDS 2015



What are the  
Mystics  
about?

- Generations of netballers before us from this Zone
- Special opportunity to be competitive
- Flagship team

# What happened this season?

- Finished 7<sup>th</sup> from 10
- Still grappling with physical and mental dominance in the modern for the duration of competition
- 4 key coaching errors in games (Vixens away, Steel home, Pulse away, Firebirds away)
- Inexperienced leadership
- Strong game style to finish
- New talent coming through





Where did it go wrong?

Vs	Home or away	Win or Loss	CPTS %	TOTS %	Net Turnovers	Turnovers Made	Turnovers Gained	Shooting	Shooting %
Vixens	Away	L 34 – 58	43	45	-10	41	31	34/56	61%
Magic	Home	L 36 - 50	40	59	-6	38	32	36/58	62%
Pulse	Home	L 47 – 53	56	59	-2	34	32	47/55	85%
T'Birds	Home	W 71 – 68	73	64	+2	31	33	71/80	89%
Firebird	Away	L 50 – 58	61	55	-3	32	29	50/54	93%
Steel	Away	W 67 – 61	73	75	+4	21	25	67/74	91%
Tactix	Home	W 65 – 62	77	70	+1	21	22	65/68	96%
Magic	Away	L 50 – 56	61	74	-3	26	23	50/57	88%
Tactix	Away	W 61 – 60	77	70	+1	19	20	61/68	90%
Steel	Home	L 73 – 61	72	60	-5	25	20	61/67	91%
Pulse	Away	L 49 – 45	65	56	-1	26	25	45/50	90%
Fever	Home	W 63 - 51						63/78	81%
Swifts	Home	W 56 – 53	75	61	+2	21	23	56/64	88%

What were  
your missed  
opportunities?

Vs	Shooting	Shots Missed	Missed shots Turnover resulted	Ball in Circle No Shot Made	Missed Opportunities
Vixens	34/56	22	16	13	29
Magic	36/58	22	18	11	29
Pulse	47/55	18	5	9	14
T'Birds	71/80	9	3	6	9
Firebird	50/54	4	3	9	12
Steel	67/74	7	2	8	12
Tactix	65/68	3	0	10	10
Magic	50/57	7	4	5	9
Tactix	61/68	7	1	5	6
Steel	61/67	6	2	11	13
Pulse	45/50	5	3	7	10
Fever	63/78	15	?	?	?
Swifts	56/64	8	3	8	11

Why didn't  
you win more?

	Quarter 1		Quarter 2		Quarter 3		Quarter 4		Extra Time	
Vs	Mys	Opp	Mys	Opp	Mys	Opp	Mys	Opp	Mys	Opp
Vixens	8	17	12	11	6	17	8	13		
Magic	7	13	9	12	10	11	10	16		
Pulse	11	12	11	14	12	16	13	11		
T'Birds	12	15	14	11	15	16	15	14	15	12
Firebirds	13	17	13	13	9	16	15	12		
Steel	19	19	17	13	12	17	19	12		
Tactix	14	20	20	11	14	15	17	16		
Magic	13	12	10	17	14	13	13	14		
Tactix	15	16	16	16	15	13	15	15		
Steel	16	16	15	18	16	20	14	19		
Pulse	11	12	14	12	8	14	12	11		
Fever	15	17	15	12	18	9	15	13		
Swifts	19	12	12	17	13	14	12	10		
Average	13.31	15.23	13.69	13.62	12.46	14.69	13.69	13.54		

So what is the problem?

- Training
- Environment
- Competition
- Approach





## WHAT ARE WE GOING TO DO?

- Strongest athletes aligned with game style –).
- Experience in coaching and management
- Respect training, game style, history and requirements to win ANZ netball games

How will we  
know we have  
improved?

- Increase physical capability by 30% from October 2014 – June 2015
- Increase focus on mental strategies
- Coaching approach is simple
- Team makes top 4



# How will we do it?

- Increase expectations
- Operate within a blueprint for success (**what is success to us and what will it take to be successful**)
- Improve **quality of training**
- Promote **positive direct communication**
- **Actively accountable** (GPS, physical screening, craft sessions, athlete tracking, monthly reviews)
- Win a minimum of **1/3 away Australian games, 8/10 domestic games**



# What's important?

- Desire
- Physical and mental capability under pressure
- Engagement
- Determination
- Stretching self



How will we  
know we are  
doing it?

- **Emperors new clothes** – reality check from harshest critics
- Train for the **unknown**
- Prepare each athlete so we are **2 deep in each position** but have a **fluid consolidated starting line**
- **Game style is consistent** – stats and video analysis matches style
- Dominant conversation is about **positive performance and love of the game**
- **Behaviours and actions reflect vision**, we have to have each other up about when its not

# Who have we got?

- Maria Tutaia
- Catherine Latu
- Paula Griffin
- Elsa Brown
- Laura Langman
- Camilla Lees
- Serena Guthrie
- Nadia Loveday
- Kayla Cullen
- Temalisi Fakahokotau
- Catherine Coffin
- Sulu Tone-Fitzpatrick



# Who is responsible?

- Head Coach – Debbie Fuller
- Specialist Coach – Noeline Taurua
- Manager – Chris Tennant
- Trainer and sports coding – Sam Perva
- Physiotherapist – Stefanie Marr
- Psychologist – TBC
- Physiologist – TBC
- Nutrition – TBC
- Injury prevention/ flexibility coach - TBC
- Media – TBC
- Analysis/ skill acquisition – TBC
- Statistics – Phillip Vautier
- High Performance Manager – Hamish Barton
- Apprentice coaches – TBC observation roles



What is my  
vision?

- Respect
- Pride



# Northern Mystics

- Refresh of our branding
- Undertook a fan survey - very pleasing results
- Membership sales underway
- Centre incentive for selling membership

- Questions?



**NETBALL  
NORTHERN**

*Integrity, Unity, Loyalty, Excellence*